

## Profile ID

# Nasogastric Tube Placement

CSTF

Total Score: 10, Passing Grade: 8, Version: 6

1. Only those patients who appear malnourished should have a nutrition assessment

(Score: 1)

True

False

2. Parenteral nutrition is often appropriate in patients with dysphagia

(Score: 1)

True

False

3. pH testing may be adequate for checking satisfactory NG tube placement

(Score: 1)

True

False

4. After inconclusive pH testing, if the NG tube does not bisect and pass beneath the carina on X-ray then the NG tube should not be used

(Score: 1)

True

False

5. After inconclusive pH testing, if the tip of the NG tube is not seen to pass below the diaphragm on X-ray then the NG tube should not be used

(Score: 1)

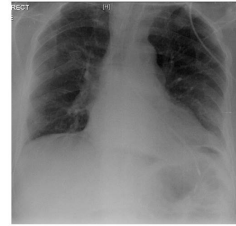
True

False

6. Q6. Is the NG tube correctly placed? (Score: 1)

Yes

No



7. Q7. Is the NG tube correctly placed? (Score: 1)

Yes

No



8. Q8. Is the NG tube correctly placed? (Score: 1)

Yes

No



9. Q9. Is the NG tube correctly placed? (Score: 1)

Yes

No



10. Q10. Is the NG tube correctly placed? (Score: 1)

Yes

No

